

Audax Body Worn Video System

Chest Camera - User Guide



1. System Components

The system is supplied complete with the following:

- A. Chest Camera (including Screen)
- B. Internal (non-removable) 32Gb Solid State memory
- C. Universal metal clip with 360° rotation
- D. USB 2.0 cable
- E. Wall Socket USB Charger



2. System Features

- Full HD video recording
- Solid State memory
- Still image capture
- Audio
- IR (Auto or Manual)
- GPS
- 140° Wide Angle Lens
- Secure, password protected files
- IP67



3. NOTES / WARNINGS

Charging Battery – Prior to first use of the system, charge the battery for a minimum of four hours. When the battery is fully charged, the Blue “POWER” LED on the top of the device will turn OFF. Please note that your camera may arrive already fully charged, so don't be surprised if, the first time you try to charge it, the blue “charging” light does not come on.

Changing Settings – We recommend that all recorded video / image files are backed up before changing any system settings. Failure to do so may cause recorded footage/files to be deleted.

Internal Memory – Gaining or attempting to gain physical access to the Internal Memory will invalidate the system Warranty.

Cables – Only ever use the supplied chargers and cables. Using other “similar” cables may invalidate the system Warranty.

Password Protection – The Chest Camera device has two different Passwords set:
a. The “Settings” Menu has the initial password set as **000000** (Please see Section 6, para i for details of how to set Passwords).

The software will not allow access to settings and downloading without using this password. Audax recommend that this Password is re-set and safely recorded at the earliest opportunity.

b. The “Replay” Menu has the password set as **000001** and this can also be changed. This allows that you can give this password to the user so that they can view recorded footage (if you require). However, they will NOT be able to access other areas (settings / downloading) with this password.

IMPORTANT NOTE: If, after setting, your password is lost then the device will have to be returned to be re-set. In that event, a fee will be chargeable and any footage held on the unit might be erased as part of the re-setting process.

Screen Protectors – The Chest Camera device may be dispatched with a protective film covering the camera lens (front) and viewing screen (back). Please ensure that the film is peeled off before using.

4. Views

Top

- a. Power – RED LED shows the device is charging
- b. Work – GREEN LED shows the device is ON (when Recording, this LED will show RED)



Front

- a. Top left – White light filter
Top right – IR Sensor
Centre – Camera lens
Bottom Left/Right – IR Illuminators -
- b. Record (Video) button
- c. Still image button



Left

- d. USB connection
- e. Audio only button
- f. Manual IR button



Right

- a. Video Record button
- b. Camera (still image) button
- c. Power “on / off” button



Rear

- a. 360° detachable clip
- b. Display Screen
- c. (1) “Menu” / “OK” button
- d. (2) “Up” button
- e. (3) “Down” button
- f. (4) “Back” / “Replay” button



1 2 3 4

5. General System Operation (please refer to buttons listed above)

a. Power On/ Off

1. Press the POWER ON / OFF button for 1 second; the camera will be turned on and enter the standby mode (the device will vibrate).

IMPORTANT NOTE: Please also see section 6 para r regarding the “LCD auto off” function and para s regarding the “Auto off” function.

When the device is ON, pressing the POWER button for 1 second will turn the device OFF

b. Video-recording

1. Once turned on, the device will automatically enter the camera preview mode and a live picture will be shown on the display screen. Press the RECORD button to commence recording; the device will vibrate and the GREEN “work” LED on the top will change to RED. A RED circle will also show on the display screen.

2. Press the RECORD button again to stop recording; the device will vibrate and the “work” RED LED will return to GREEN. At this point, recording will stop and the video will be saved.

3. If recording is required in “low light” conditions, press the IR button (unless IR “Auto” has been previously selected). The IR illuminators will be turned on and the device will enter the night shooting mode.

IMPORTANT NOTE: Video recorded when IR has been selected will be in black and white only.

c. Still Images

1. Once turned on, the device will automatically enter the camera preview mode. Press the PHOTO button to take still images.

2. As already mentioned in b.3. above; if photos are to be taken in “low light” conditions, turn on the IR illuminators (unless IR “Auto” has been previously selected).

IMPORTANT NOTE: Still images taken when IR has been selected will be in black and white only.

3. When recording Video, the PHOTO button can be pressed to capture the picture recorded at that time.

d. Audio recording

1. Once turned on, the camera will automatically enter the camera preview mode. Press the AUDIO button to record audio ONLY. The device will vibrate and the “work” LED on the top will change to AMBER.

2. Press the AUDIO button again to end audio recording, and the audio file will be automatically saved.

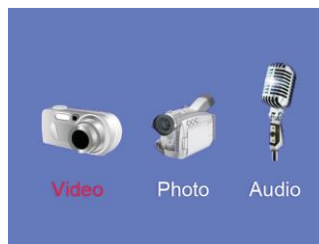
e. Video Playback

The device has been designed and manufactured with a one-touch playback button and quick playback button.

When in the “standby” state, press the PLAYBACK button to enter the playback menu.

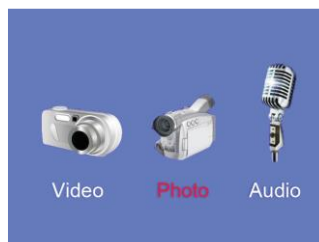
IMPORTANT NOTE: Playback of video, still images and audio only recordings are only available once the correct 6 digit alpha/numeric Password has been entered.

1. When in the “playback” state, press “OK” to select the Video playback option and press the UP or DOWN button to select the video you want to play.
2. Press the OK button to play the video file. Pressing the OK button while the file is playing, will pause playback. Press OK again to continue.



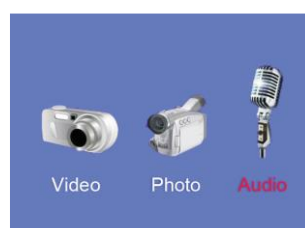
f. Still Image playback

1. When in the “playback” state, select the Photo playback option and press the UP or DOWN button to select the image you want to view.
2. Press the OK button to view the picture. Pressing the UP/DOWN buttons will cycle photos.
3. When choosing the slideshow mode to view pictures, they will be played in cycle under the slideshow mode.



g. Audio Playback

1. When in the “playback” state, select the audio play back option and press the UP or DOWN button to select the audio file you want to hear.
2. Press the OK button to play the audio.



6. Parameter Settings

Press the MENU button to go to the “SETUP” screen in order to change parameter settings.

a. Resolution

Select RESOLUTION (will be highlighted in RED) and select OK. This gives you the option to change the resolution settings.



There are seven options to select from:

2560 x 1080 – 30 fps	2304 x 1296 – 30 fps
1920 x 1080 – 30 fps	1280 x 720 – 60 fps
1280 x 720 – 30 fps	848 x 480 – 60 fps
848 x 480 – 30 fps	

Press “Up” or “Down” to select the required resolution and press “OK” to confirm. Press “Back” to return to standby.

b. Video quality

Select VIDEO QUALITY (will be highlighted in RED) and select OK. This gives you the option to change the video quality (bitrate) in the following settings:



There are three options to select from: High, Medium and Low. This gives different settings dependent on the Resolution set.

2560 x 1080 – 30	18.0Mbps High	15.0Mbps Medium	12.0Mbps Low
2304 x 1296 – 30	18.0Mbps High	15.0Mbps Medium	12.0Mbps Low
1920 x 1080 – 30	12.0Mbps High	10.0Mbps Medium	8.0Mbps Low
1280 x 720 – 60	12.0Mbps High	9.0Mbps Medium	6.0Mbps Low
1280 x 720 – 30	8.0Mbps High	6.0Mbps Medium	4.0Mbps Low
848 x 480 – 60	8.0Mbps High	6.0Mbps Medium	4.0Mbps Low
848 x 480 – 30	5.0Mbps High	4.0Mbps Medium	3.0Mbps Low

Press “Up” or “Down” to select the required setting and press “OK” to confirm. Press “Back” to return to standby.

c. Video Duration

Select VIDEO DURATION (will be highlighted in RED) and select OK. This gives you the option to change the video file duration times.



There are four time intervals to select from:

5 / 10 / 15 / 30 minutes

Press "Up" or "Down" to select the required resolution and press "OK" to confirm. Press "Back" to return to standby.

d. Photo Size

Select PHOTO SIZE (will be highlighted in RED) and select OK. This gives you the option to change the photo resolution sizes.



There are six resolutions to select from:

3 / 5 / 8 / 12 / 16 / 33 / 36 Megapixels

Press "Up" or "Down" to select the required resolution and press "OK" to confirm. Press "Back" to return to standby.

e. Capture

Select CAPTURE (will be highlighted in RED) and select OK. This gives you the option to change the continuous photo shooting in a sequence.



There are six options to select from:

- Off – no continuous photo shooting (a single photo will be captured)
- 5 – Five photos taken with one press of the Capture button
- 10 – Ten photos taken with one press of the Capture button
- 15 – Fifteen photos taken with one press of the Capture button
- 20 – Twenty photos taken with one press of the Capture button
- 25 – Twenty Five photos taken with one press of the Capture button

Press "Up" or "Down" to select the required option and press "OK" to confirm. Press "Back" to return to standby.

f. Volume

Select VOLUME (will be highlighted in RED) and select OK. This gives you the option to change the volume of the audio on the device.

IMPORTANT NOTE: This setting has NO effect on the sensitivity of the audio recording Microphone e.g. even if this is set to OFF, audio will still be recorded.



There are four options to select from: High / Medium / Low / Off

Press “Up” or “Down” to select the required option and press “OK” to confirm. Press “Back” to return to standby.

g. ID

Select ID (will be highlighted in RED) and select OK. This gives you the option to set the ID number of the device and/or user.



The “Up” or “Down” buttons can now be used to select 0 to 9 or A to Z. Press “OK” to select and confirm each setting.

Once the final Letter / Number has been selected, you will automatically be returned to the settings menu

The first 00000 are for the User ID if used (the X7 cannot be changed)
The second 000000 are for the Unit ID if used

Press “Back” to return to standby.

h. Date / Time

Select DATE/TIME (will be highlighted in RED) and select OK. This gives you the option to set the date and time.



Press “Left” or “Right” to select the required position (year, month, day) and press “OK”.

The “Up” or “Down” buttons can now be used to select the correct Date. Follow the same process for the Time. Press “OK” to confirm each setting.
Press “Back” to return to standby.

i. Password

Select PASSWORD (will be highlighted in RED) and select OK. This gives you the option to change the password. The DEFAULT Password is set as **000000**.



IMPORTANT NOTE: When changing Passwords, the current Password MUST be entered first.

You will be returned to the Password menu – select “OK” to commence setting the new password.

Press “Up” or “Down” to select the required setting (0 to 9 or A to Z) and press “OK” to confirm each setting.

Press “Back” to return to standby.

j. PB-Password

Select PB-PASSWORD (will be highlighted in RED) and select OK. This gives you the option to change the “Replay” password. The DEFAULT Password is set as **000001**.



IMPORTANT NOTE: When changing Passwords, the current Password MUST be entered first.

You will be returned to the Password menu – select “OK” to commence setting the new password.

Press “Up” or “Down” to select the required setting (0 to 9 or A to Z) and press “OK” to confirm each setting.

Press “Back” to return to standby.

k. Pre Event Recording

Select PRE_RECORDING (will be highlighted in RED) and select OK. This gives you the option to select Pre-Event Recording.



There are two options to select from:

Off – No pre-event recording

On – the camera will pre-record for up to 25 seconds prior to the pressing of the “Record” button (the actual pre-record time will depend on the resolution set e.g. 1080p – 30fps resolution will give 25 seconds, lower resolutions will give more time but higher resolutions will give less time).

Press “Up” or “Down” to select the required option and press “OK” to confirm.

Press “Back” to return to standby.

l. Post Event Recording

Select POST_RECORDING (will be highlighted in RED) and select OK. This gives you the option to select Post Event Recording.



There are six options to select from:

Off – No post event recording

10, 20, 30, 60 or 300 seconds – The camera will record for the selected duration AFTER stopping recording.

Press “Up” or “Down” to select the required option and press “OK” to confirm.

Press “Back” to return to standby.

IMPORTANT NOTE: When POST_RECORDING has been set, the device will continue to record, after the “stop recording” button has been pressed, until the time period (e.g. 20 seconds) has been reached.

m. Beep Sound

Select BEEP SOUND (will be highlighted in RED) and select OK. This gives you the option to enable or disable the audible sound on the device.



There are two options to select from: On or Off

Press “Up” or “Down” to select the required option and press “OK” to confirm.

Press “Back” to return to standby.

n. Microphone

Select MICROPHONE (will be highlighted in RED) and select OK. This gives you the option to mute or unmute the microphone.

NOTE: We would always recommend that the Microphone is set to Unmute



There are two options to select from: Mute or Unmute

Press “Up” or “Down” to select the required option and press “OK” to confirm.

Press “Back” to return to standby.

o. Light Sensitivity

Select LIGHT-SENSITIVE (will be highlighted in RED) and select OK. This option gives a clearer picture in dark conditions when IR is used.



There are three options to select from: Low, Medium or High

IMPORTANT NOTE: This option only has any value when the Infrared Switch (O) is set to “Auto”

Press “Up” or “Down” to select the required option and press “OK” to confirm.

Press “Back” to return to standby.

p. Infrared Switch

Select INFRARED SWITCH (will be highlighted in RED) and select OK. This gives you the option to select the use of the IR Illuminators.



There are two options to select from: Manual / Auto

Press “Up” or “Down” to select the required option and press “OK” to confirm.

Press “Back” to return to standby.

q. LCD brightness

Select LCD BRIGHTNESS (will be highlighted in RED) and select OK. This gives you the option to select the brightness of the screen.



There are three options to select from: High / Medium / Low

Press “Up” or “Down” to select the required option and press “OK” to confirm.

Press “Back” to return to standby.

r. LCD Auto Off

Select LCD AUTO OFF (will be highlighted in RED) and select OK. This gives you the option to power off the LCD Screen after a certain period of time (unless any other operation is selected). **NOTE:** Having the LCD Screen on continuously will use more battery power.



There are four options to select from:

- Off – the camera will NOT automatically be turned off
- 30 secs – the LCD Screen will turn off after 30 seconds
- 1 min – the LCD Screen will turn off after 1 minute
- 3 mins – the LCD Screen will turn off after 3 minutes
- 5 mins – the LCD Screen will turn off after 5 minutes

Press “Up” or “Down” to select the required option and press “OK” to confirm.

Press “Back” to return to standby.

s. Auto Off

Select AUTO OFF (will be highlighted in RED) and select OK. This gives you the option to completely power off the camera off after a certain period (unless any other operation is selected). **NOTE:** this is different to the “LCD Auto off” settings given in Q above.



There are four options to select from:

Off – the camera will NOT automatically be turned off

This is the RECOMMENDED SETTING for all users

3 – the camera will be turned off after 3 minutes

5 – the camera will be turned off after 5 minutes

10 – the camera will be turned off after 10 minutes

Press “Up” or “Down” to select the required option and press “OK” to confirm.

Press “Back” to return to standby.

t. Loop Recording

Select LOOP RECORDING (will be highlighted in RED) and select OK. This gives you the option to either overwrite old video files stored on the camera or to have the camera stop recording when the 32Gb of Memory is full.



There are two options to select from:

Off – disables the Recycle (overwriting) function

On – enables the Recycle (overwriting) function

Press “Up” or “Down” to select the required option and press “OK” to confirm.

Press “Back” to return to standby.

u. Time Zone

Select TIME ZONE (will be highlighted in RED) and select OK. This option is used to adjust the local time zone when GPS is effective (see below for GPS).



Press "Up" or "Down" to select the required option and press "OK" to confirm.

Press "Back" to return to standby.

v. GPS

Select GPS (will be highlighted in RED) and select OK. This gives you the option to enable the GPS function.



There are two options to select from:

Off – disables GPS function

On – enables GPS function

Press "Up" or "Down" to select the required option and press "OK" to confirm.

Press "Back" to return to standby.

w. Default setting

Select DEFAULT SETTING (will be highlighted in RED) and select OK. This will give you the option to return the Camera back to its original default (factory) settings.

IMPORTANT NOTE: Resetting the camera DOES NOT delete any recorded footage.



Select the √ icon to reset settings or select the x to cancel

Press "Up" or "Down" to select the required option and press "OK" to confirm.

Press "Back" to return to standby.

x. Language

Select LANGUAGE (will be highlighted in RED) and select OK. This shows the current Language set on the device.

There are three options to select from: English, French or Vietnamese



Press “Up” or “Down” to select the required option and press “OK” to confirm.

Press “Back” to return to standby.

y. Firmware Version

This shows the current Firmware Version on the device.



If new firmware updates are released, these can be emailed to you along with the instructions for installation.

NOTE: There is no option to alter this setting.

Press “Back” to return to standby.

z. Vehicle

This turns on the Vehicle mode for automatic start/stop recording from vehicle ignition.

There are two options to select from: On and Off



Press “Up” or “Down” to select the required option and press “OK” to confirm.

Press “Back” to return to standby.

NOTE: The use of the Vehicle mode will generally depend on the age of the vehicle itself and whether the USB point / 12v socket remains powered even when the vehicle ignition is turned off. The assumption for using this setting is that the ports DO NOT remain powered when the vehicle ignition is turned Off.

7. Computer Connection Instructions

NOTES:

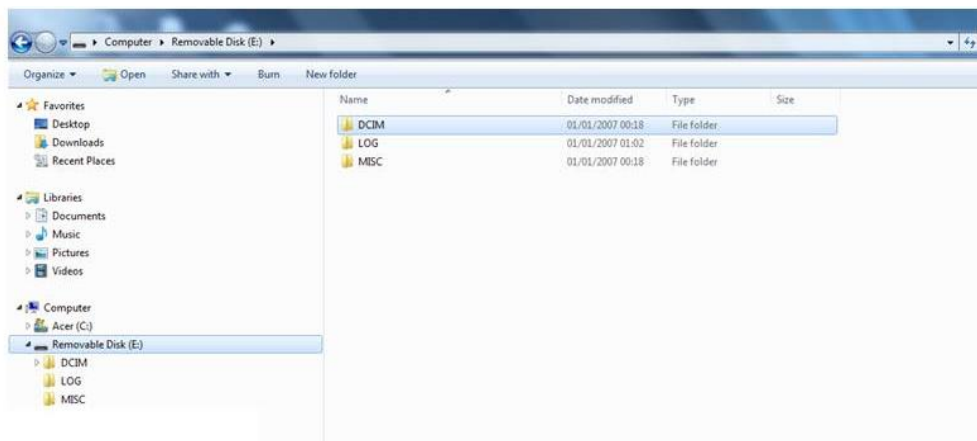
- a. Only ever use the supplied USB cable when connecting the device to a Computer.
- b. No additional Drivers or Software are supplied for this device. The camera will work on Operating Systems such as Windows XP / 7 / 8 / 10 and any drivers needed should automatically be installed by Windows.

1. Connect the supplied USB Cable to the device and Computer

2. Turn on the device

3. Enter the correct Password (the computer will not detect the device until the password has been entered).

4. The device will show “Connected to PC” on the rear screen, and the device will appear as an external “Removable Disk” as per the diagram below:



5. All video, still images and audio files will appear in the DCIM folder. The LOG folder contains a basic “admin trail” of the device use. The MISC folder is not used and may not show.

6. Click to open one of the recordings and this will immediately start playing the recording in a movie application (e.g. VLC Media Player / Windows Media Player).

VLC Media Player is recommended for video files recorded on the Camera – a free download for this player can be found at: <http://www.videolan.org/vlc/>. Still images are stored as JPEG files and can be opened using media such as Windows Photo Viewer etc.

7. Removing the USB cable from the device, when connected to a PC, will automatically turn the device off.

Warranty

This product is warranted product against defects in material or workmanship for 1 year from date of purchase.

This limited warranty shall not apply to any product or item subjected to misuse, including static discharge or over charge, failure by user to follow User Guide instructions, product modification, ordinary wear and tear, negligence or improper use/operation.

This limited warranty is also voided if the DVR is found to have an altered or tampered with serial number or if access or attempted access to the internal memory is suspected.

Full details of our Terms and Conditions can be found on our website www.audaxuk.com.

This Product is exclusively distributed Worldwide by Audax Global Solutions Ltd and all claims, questions and contact should be with Audax in the first instance

© Audax Global Solutions Ltd 2020

This document is not to be reproduced in part or in whole without the prior permission of Audax Global Solutions Ltd

Audax Global Solutions Ltd
Plymouth, Devon PL1 3JY
T: +44 (0)1752 264950
E: info@audaxuk.com
W: www.audaxuk.com